

# Mead Crescent E4

Offers Over £475,000

## FREEHOLD

 2 BEDROOMS

 1 BATHROOMS

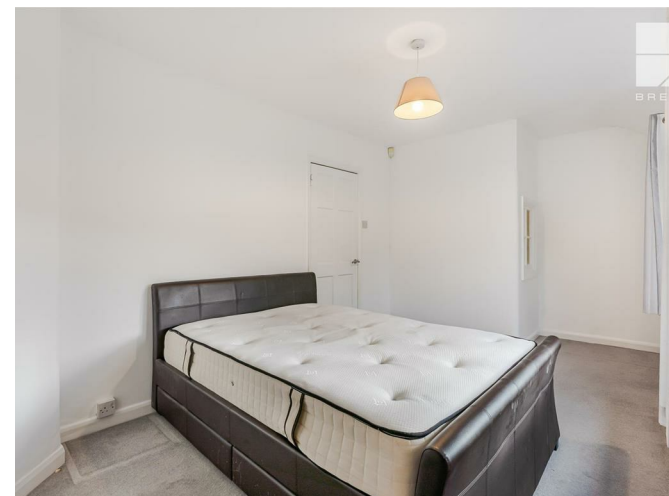
 1 RECEPTIONS

## Details

- TWO BEDROOM
- MID TERRACE
- OFF STREET PARKING
- CUL DE SAC LOCATION
- CHAIN FREE

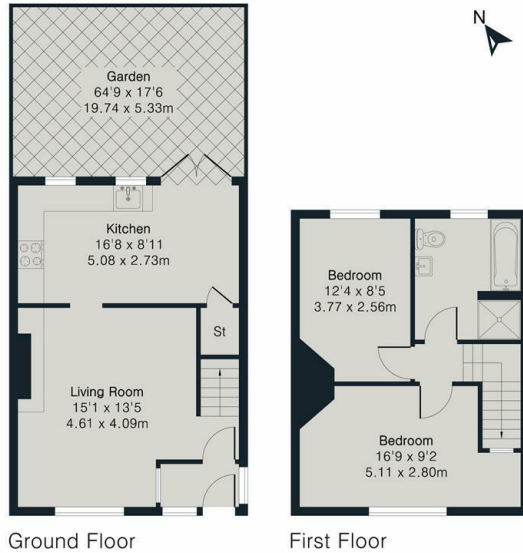
EPC RATING: 71 (C)  
COUNCIL TAX:

BREENS





**Approximate Gross Internal Area 776 sq ft - 72 sq m**  
 Ground Floor Area 409 sq ft - 38 sq m  
 First Floor Area 367 sq ft - 34 sq m



**PINK PLAN**  
 Floor plan produced in accordance with RICS Property Measurement 2nd Edition. Although Pink Plan Ltd ensures the highest level of accuracy, measurements of doors, windows and rooms are approximate and no responsibility is taken for error, omission or misstatement. These plans are for representation purposes only and no guarantee is given on the total square footage of the property within this plan. The figure icon is for initial guidance only and should not be relied on as a basis of valuation.

**BREENS**



**BREENS**

## Contact Us

02085315454  
 highampark@breens.property  
 www.breens.property  
 2 Broadway Parade, Winchester Road, Highams Park,  
 E4 9LG

All sizes are approximate. The Agent has not tested any apparatus, equipment, fixtures and fittings, or services and so cannot verify that they are in working order or fit for the purpose. A buyer is advised to obtain verification from their Solicitors or Surveyor. Photographs are for illustration purposes only and may depict items, which are not for sale or included in the sale price. References to tenure of a property are based upon Information supplied by the vendor. The agent has not had sight of the title documents, a buyer is advised to obtain verification from their solicitor.

Money Laundering Regulations 2003: Intending purchasers will be asked to produce identification, documentation at a later stage and we would ask for your co-operation in order that there will be no delay in agreeing the sale. These particulars are intended to give a fair description of the property only and are in no way guaranteed, nor do of any contract. They are issued on the express condition that all negotiations are conducted through Breens Estate Agents. All subject to contract and to being unsold.